



Census of Marine Life Education and Outreach Network

www.coml.org

info@coml.org

News from the Census November 2009

In This Issue

- Synthesis Calendar
- Into the Abyss
- Boost to CReefs
- Final MAR-ECO Workshop
- Cruise to the SW Indian Ocean Ridge
- The Census Goes Social
- Cindy Van Dover Honored
- Funding Renewals
- Education Websites Redesigned

November Synthesis Calendar

Don't forget to check your November Synthesis Calendar.

Here are some important dates:

Nov 10 CReefs second expedition to Heron Island begins

Nov 24 150 years since the publication of Darwin's *The Origin of Species*

NOVEMBER 2009						
Sunday	Monday	Tuesday	Wednesday	Thursday	Friday	Saturday
1	2	3	4	5	6	7
8	9	10 Check second expedition to Heron Island begins	11 Independence Day (Public)	12	13	14
15	16	17	18	19	20	21
22	23	24	25	26	27	28
29	30	Check second expedition to Heron Island ends		Thanksgiving Day (23)		

TED in November
Census of Marine Life will participate in the November 2009 TED in November event. The South American region and the Southern Ocean regions are the focus of the event. For more information, visit www.ted.com.

NOVEMBER 2009
NOVEMBER 2009



To view the Synthesis Calendar click [here](#).

Into the Frozen Abyss



"Into the Frozen Abyss", the documentary filmed by Max Quinn during a New Zealand IPY-CAML expedition, will premiere on the Smithsonian Channel on Sunday, December 27 at 9pm NZT. The film, which has been edited

from about 60 hours of high-definition footage, is a co-production of NHNZ, the Smithsonian Network, and National Geographic Channels International.

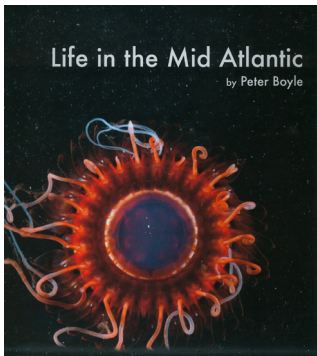
Multi-million Dollar Boost to CReefs Project

The Australian Biological Resources Survey and CReefs, with support from the Great Barrier Reef Foundation, have provided funding to five scientists from Australian museums and other research organizations to work with the Australian Institute of Marine Science-led CReefs project that is bringing marine life new to science to the surface. The grants, collectively worth \$1.2 million over three years, are joined with cash and in-kind contributions from the scientists' host institutions to make a total contribution of \$2.7 million toward finding new reef life.



MAR-ECO Holds Final Workshop

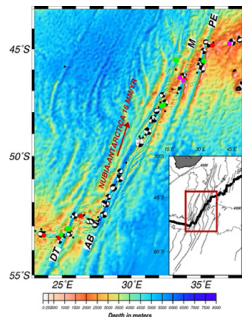
MARECO held its final steering group meeting and project workshop in Kristiansand, Norway, October 19-22. Fifty-seven scientists met to review progress and prepare synthesis documents. One of the highlights was a public event, "Deep Ocean Odyssey," that incorporated science, music, beautiful video, images, and sculptures into an educational event for nearly 700 students.



Another highlight was the first presentation of Peter Boyle's recently published book about the work of MAR-ECO titled, "Life in the Mid-Atlantic." To order a copy, visit Amazon.co.uk.

Cruise to Explore SW Indian Ocean Ridge

On November 11, Dr. Alex Rogers of CenSeam will be embarking on a cruise to the SW Indian Ocean Ridge from Reunion Island. The cruise will investigate pelagic biology and oceanography of five seamounts in the region – Atlantis, MOW, Sapmer, Melville and Coral Seamounts – and will return to Port Elizabeth on December 21.



The Census Goes Social

Keep abreast of Census information and connect with network colleagues by joining the Census Facebook page, following us on Twitter, or subscribing to the Census YouTube channel.



First Mines Medal Awarded to Dr. Cindy Van Dover

The South Dakota School of Mines and Technology awarded the first Mines Medal to Dr. Cindy Van Dover. The award, which honors engineers, scientists, and researchers who have demonstrated exceptional leadership and innovation, was presented at a gala held in Rapid City on October 14. The event provided a rare opportunity for the public to hear first-hand about Dr. Van Dover's ground-breaking research characterizing deep-sea geothermal light sources and organisms' adaptations to extreme, hydrothermal environments, as well as her experiences as the first female pilot of the submersible, *Alvin*.



Congratulations on Funding Renewals

The Sloan Foundation Board of Trustees recently voted to fully fund proposals for CReefs, CMarZ, CAML, CenSeam, the 2010 London Events, and the final year of Education & Outreach Team activities.



Educational Websites Redesigned for 2010

Two of the Census's educational websites have recently been updated to include revised content and a new look. Find these updated sites through the Education Link under the Census Resources section of the portal, or at the links below.

Marine Life Discoveries <http://www.coml.org/discoveries/home>

Investigating Marine Life <http://www.coml.org/investigating/home>

The Census of Marine Life is a global network of researchers in more than eighty nations engaged in a ten-year scientific initiative to assess and explain the diversity, distribution, and abundance of life in the oceans. The world's first comprehensive Census of Marine Life — past, present, and future — will be released in 2010.